



P-Class North Island Champs 26th – 27th October 2024

Sailing Instructions

Organising Authority: Glendowie Boating Club (GBC)
37 Glendowie Road, Glendowie, Auckland 1071

This sheet, including attachments, supplements Appendix S of the Racing Rules of Sailing (page 146 RRS 2021-2024).

1 RULES

1.1 The regatta will be governed by the rules as defined in The Notice of Race.

2 NOTICES

2.1 The Race office is located in the tower of the Glendowie Boating Club (GBC)

2.2 Notices and other communications will be made on the
[P-Class GBC North Islands WhatsApp Group](#)

3 SIGNALS MADE ASHORE

3.1 Signals made ashore will be displayed on the flagstaff on the tower of the GBC

3.2 When flag AP is displayed ashore, “1 minute” is replaced with “not less than 20 minutes” in Race Signals AP.

3.3 The course area chosen for the day will fly from the flagstaff.

4 SCHEDULE OF RACES

4.1 Schedule

Saturday 26 th October 2024	
11:00 am	Registration opens
12:00 am	Briefing
After briefing	Support Boat Briefing
1:00 pm	Time of first Warning Signal
	4 races back-to-back
6:00 pm (or earlier)	Spot Prizes (Weather dependent)
Sunday 27 th October 2024	
1:00 pm	Time of first Warning Signal
	4 races back to back
5:00 pm	Last possible Start
After the final race	Prizegiving & Spot Prizes

5 CLASS FLAGS

5.1 The Class Flag will be a Black or Blue 'P' with a White Background

6 COURSES

6.1 The courses to be sailed, the order in which the marks are to be passed, and the side on which each mark is to be left are shown in Addendum B.

6.2 In the event that a gate mark is missing and has not been replaced with an object displaying flag M, the remaining gate mark shall be rounded to port.

7 MARKS

The description of the marks is below in Addendum B

8 THE START

A boat starting more than four minutes after her starting signal will be scored Did Not Start (DNS) without a hearing. This changes RRS A5.1 and 5.2.

9 TIME LIMITS

9.1 The target time for the first finisher is 30 minutes

9.2 The race time limit is 45 minutes

9.3 There is no prescribed time limit for the first boat to pass mark 1. Appendix S, SI 12.2 is deleted.

10 PENALTY SYSTEM

Racing rule 44.1 will be changed as follows: The Two Turns Penalty is replaced by a one-turn Penalty.

11 PROTESTS AND REQUESTS FOR REDRESS

Immediately after finishing a boat intending to protest shall, in addition to the requirements of rule 61.1(a), inform the race committee boat at the finishing line of her intention to protest and the identity of the boat(s) being protested. The protesting boat must receive an acknowledgement from the race committee. This changes RRS 61.

12 SAFETY REGULATIONS

- 12.1 [DP] Boats not leaving the shore for a scheduled race shall promptly notify the race office.
- 12.2 [DP] The official Check-Out and Check-In Sheets will be on a table near the main entrance to the clubrooms.
 - 12.2.1 Competitors shall individually check out before racing. Failure to complete Check-out may result in the competitor being scored DNC for all races that day.
 - 12.2.2 Competitors shall individually check in immediately upon returning to shore after racing no later than the protest time limit. Failure to complete Check-in may result in the competitor being scored DNC for all races that day.
- 12.3 [DP] A boat retiring from racing shall notify the Race Committee before leaving the racing area, or if that is not possible, shall notify the race office as soon as possible after returning ashore.

13 REPLACEMENT OF CREW OR EQUIPMENT

- 13.1 Substitution of competitors is not allowed without the prior written approval of the Protest Committee.
- 13.2 Substitution of damaged or lost equipment is not allowed unless authorised in writing by the Protest Committee. Requests for substitution shall be made to the committee at the first reasonable opportunity, which may be after the race.

14 EQUIPMENT OR MEASUREMENT CHECKS

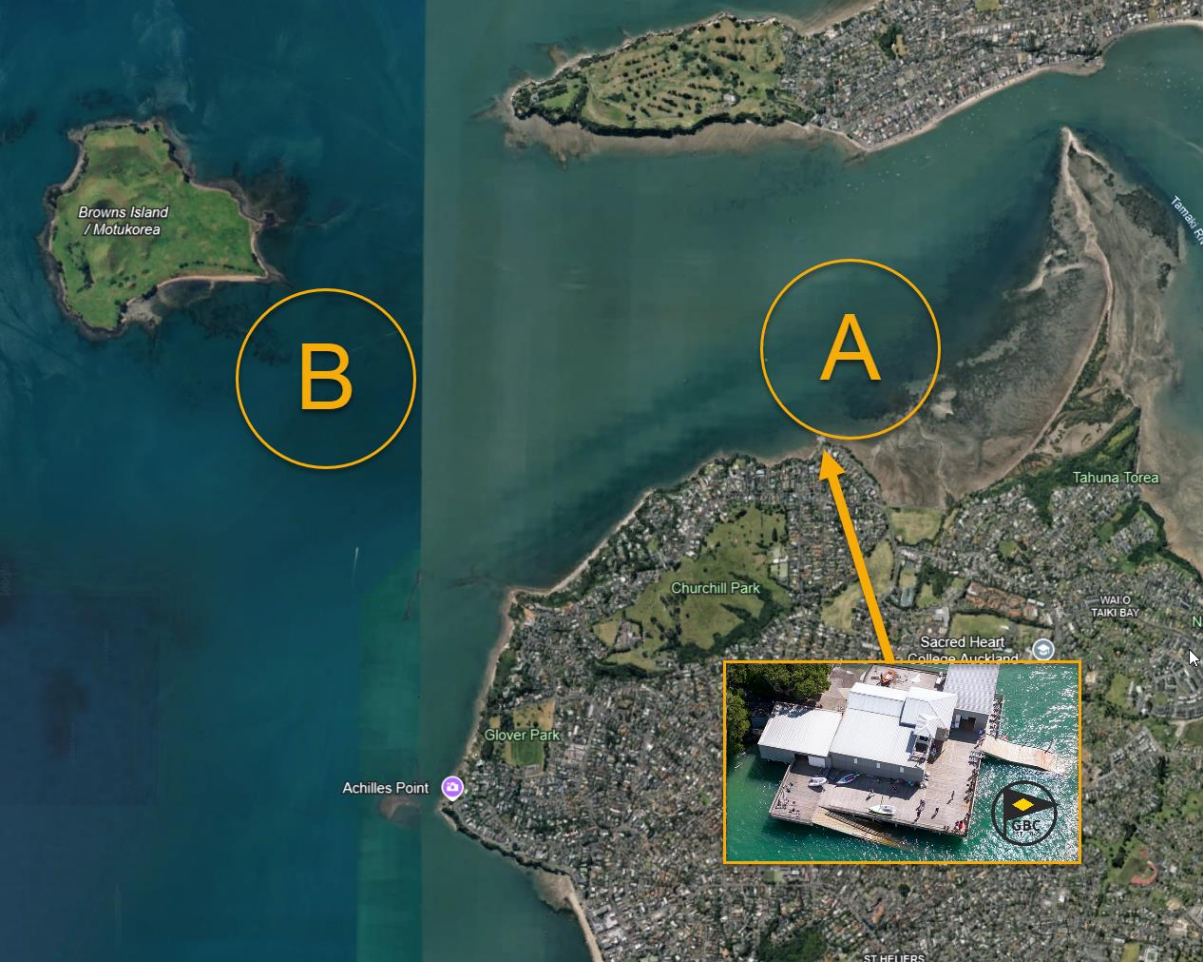
- 14.1 A boat or equipment may be inspected at any time for compliance with their class rules, the Notice of Race and/or the Sailing Instructions.

15 SUPPORT BOATS

- 15.1 Support boats must be registered with the Organising Authority at Registration.
- 15.2 All support person vessels shall always have an engine safety cut-out switch (kill cord) attached to the driver while the engine is running unless the OA has provided prior written exemption.
- 15.3 All support vessels and coach boats must have VHF communications and be available to assist the race committee if required.
- 15.4 [DP] Except when requested to participate in rescue operations, team support boats and other support persons shall stay outside areas where boats are racing and are restricted to a 5 knot speed limit, from the time of the preparatory signal until all boats have finished or the race committee signals a postponement or abandonment of all races. The areas the boats are racing in is defined as the area inside the course and within 50 metres of any mark, lay line, starting line, finishing line or any area where any boat that is racing, is sailing or may sail.
- 15.5 There is no access to launch support boats at GBC, see Addendum B for nearest boat ramps

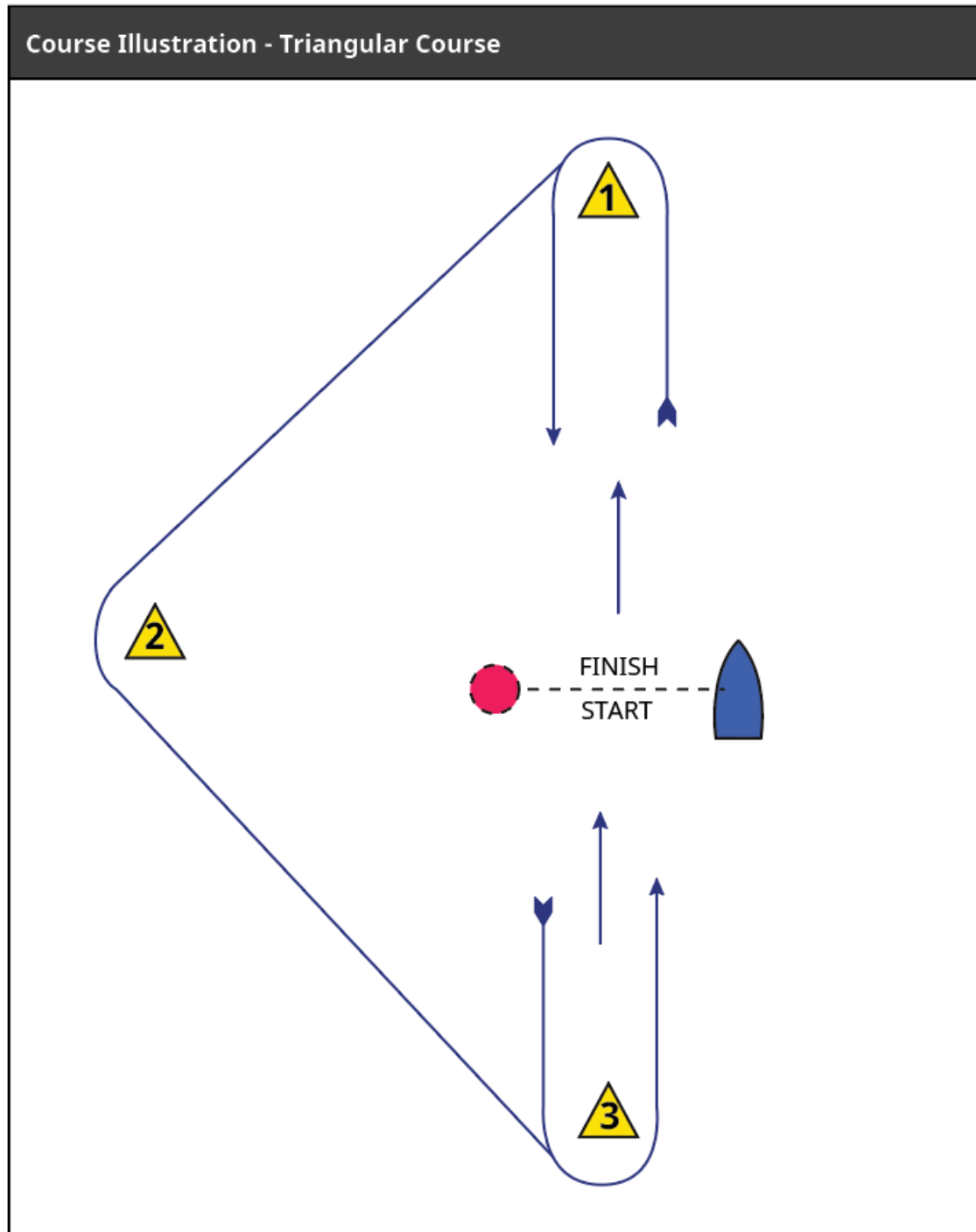
Addendum A

Racing Areas



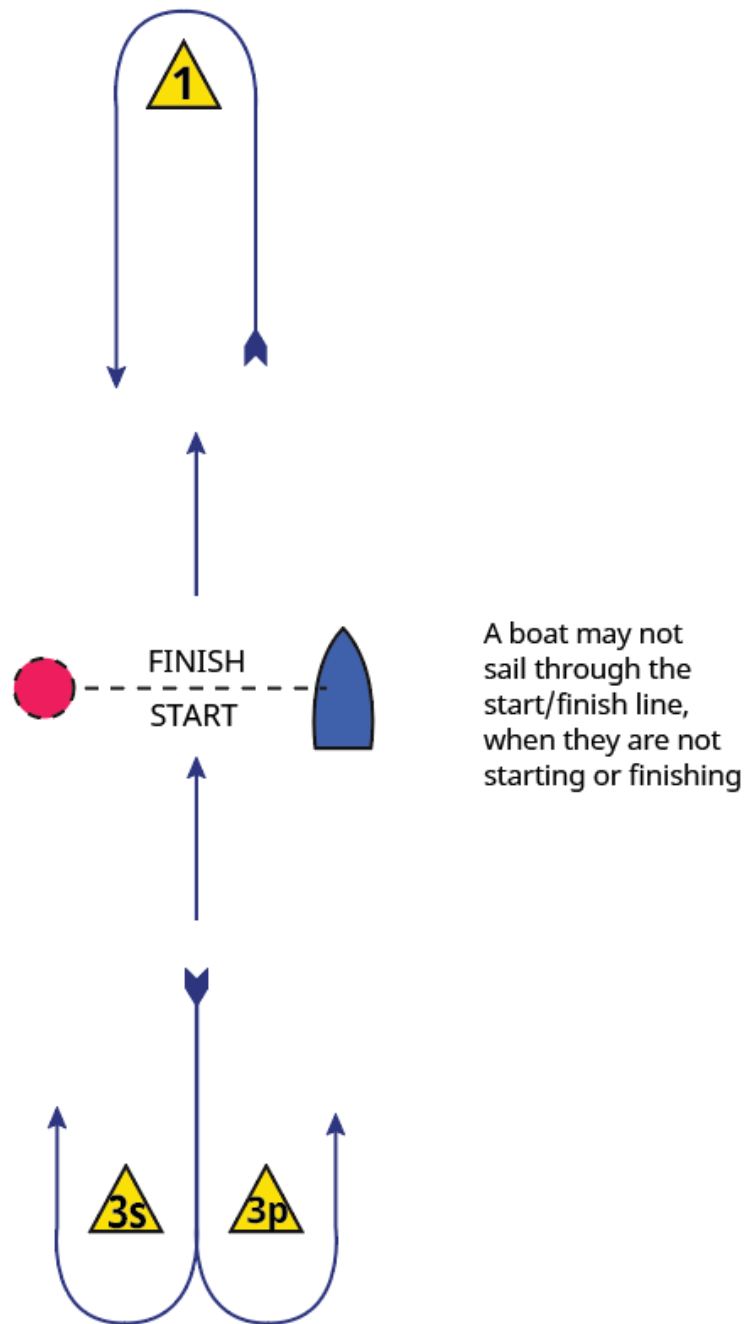
Addendum B

Courses



Signal	Mark Rounding Order
T1	Start – 1 – 2 – 3 – Finish
T2	Start – 1 – 2 – 3 – 1 – 3 – Finish
T3	Start – 1 – 2 – 3 – 1 – 3 – 1 – 2 – 3 – Finish
Marks 1,2,3 are Yellow Triangles, The Port end of the line will be an Orange Teardrop	

Course Illustration - Windward/Leeward Course



Signal	Mark Rounding Order
LW1	Start - 1 - 3s/3p - Finish
LW2	Start - 1 - 3s/3p - 1 - 3s/3p - Finish
LW3	Start - 1 - 3s/3p - 1 - 3s/3p - 1 - 3s/3p - Finish

Marks 1,3s, 3p are Yellow Triangles, The Port end of the line will be an Orange Teardrop